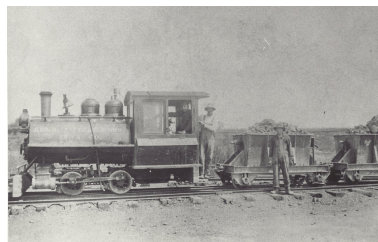


Build A Timeline

During this activity, we are going to learn about the past by building a timeline. Cut out each of the puzzle pieces below. Look for a date written on them, as well as a photograph and clues. Use what you have learned during this field trip to put the pieces in order from oldest to newest. Remember, the "older" an event is, the farther back in history happened. The "newer" an event is, the closer to now it happened. Start by using clue #1, and if you get stuck, use clue #2!

1838

A train makes it's way to Dearborn for the first time.



Clue 1: After the Detroit Arsenal was built, food and other goods were transported to Dearborn by train. Clue 2: This is the third puzzle piece in your timeline.

When something happened in the past, it means it is something that has already happened.

1908

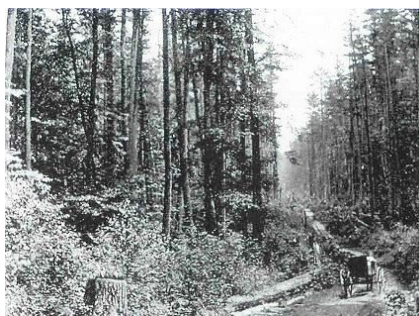
The Model T is created by Henry Ford.



Clue 1: After creating the Ford Motor Company, Henry Ford showed his invention off to the world. Clue 2: This is the fifth puzzle piece in your timeline.

1780

Pioneers begin coming to Dearborn.



Clue 1: Being a pioneer means that you were the first of your kind to do something. Clue 2: This is the first puzzle piece in your timeline.

1833

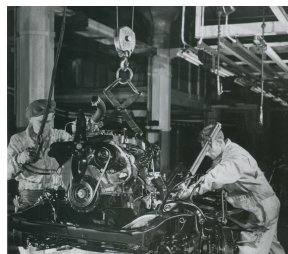
The Detroit Arsenal is built in the village of Dearborn.



Clue 1: The Arsenal was built after pioneers came to Dearborn. Clue 2: This is the second puzzle piece in your timeline.

1917

The Ford Motor Company begins building the Ford Rouge Plant.



Clue 1: After creating the Model T, Ford needed a place to make their cars, and started to build a factory called the Ford Rouge Plant. Clue 2: This is the sixth puzzle piece in your timeline.

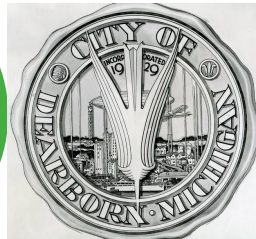


Dearborn
Historical
Museum

Pioneer Program Activity

1929

Citizens vote to make Dearborn a City instead of a village like it was in the past.



Clue 1: After construction started on the Rouge Plant, Dearborn residents decided that they wanted to be a city instead of a village. Clue 2: This is the seventh puzzle piece in your timeline.

1971

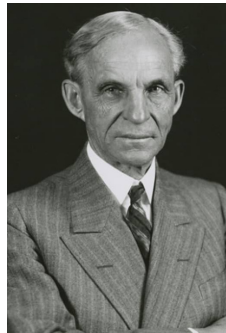
Families from the Middle East start moving to Dearborn, and ACCESS was created to help them adjust.



Clue 1: After the city's Museum was built, Dearborn became more diverse and many families from the Middle East moved here. Clue 2: This is the last puzzle piece in your timeline.

1903

The Ford Motor Company is created by
Henry Ford and friends.



Clue 1: After trains were invented, Henry Ford had the idea to create automobiles. Clue 2: This is the fourth puzzle piece in your timeline.

1950

The Dearborn Historical Museum was
created by the city.



Clue 1: The city of Dearborn created the Dearborn Historical Museum in 1950, nine years after workers went on strike. Clue 2: This is the ninth puzzle piece in your timeline.

1941

Workers at the Ford Motor Company's
Rouge Plant go on strike.



Clue 1: After Dearborn became a city, many people started working at the Rouge Plant. Some felt they were not treated fairly so they decided to strike. Clue 2: This is the eighth puzzle piece in your timeline.

A timeline is a list of important events arranged in the order in which they happened.

1600s

1700s

1800s

1900s

2000s



Oldest

Newest