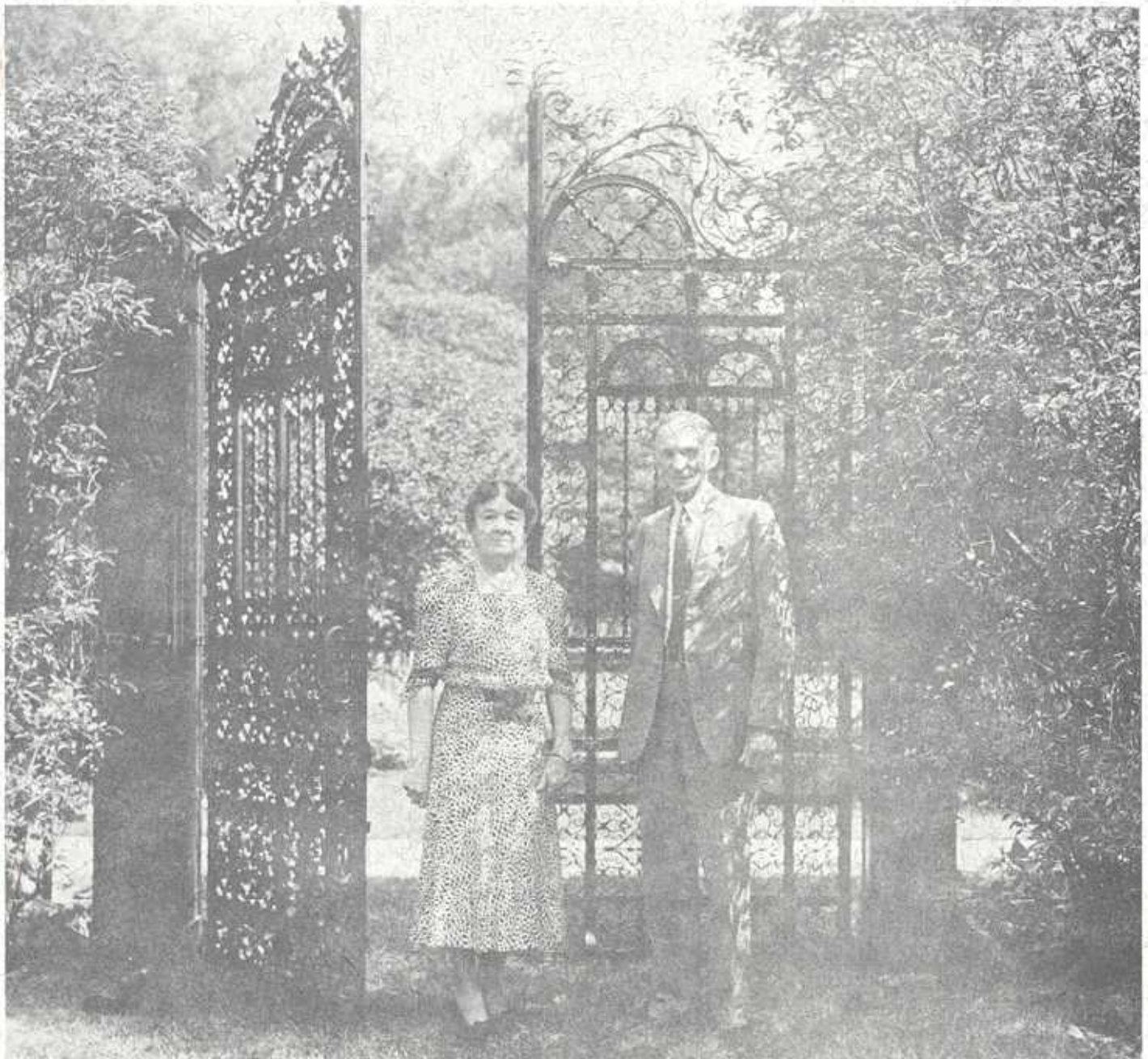


# The **DEARBORN HISTORIAN**

**Volume 20**

**Number 4**



**AUTUMN, 1980**

**Published Quarterly by  
THE DEARBORN HISTORICAL COMMISSION**



*City of Dearborn, Michigan*  
HOME TOWN OF HENRY FORD  
MAYOR JOHN B. O'REILLY

The seed for Dearborn's greatness was planted in the late 18th century when pioneer settlers industriously carved "ribbon" farms out of the Michigan wilderness lining the Rouge River. Their frontier spirit, enterprise, hard work and pride of community set an example for generations to come.

Recent years have been marked by an increasing awareness of our rich heritage and a genuine desire on the part of Dearborn citizens to know more about our city's roots.

This interest and concern, sparked immeasurably by an able and dedicated Dearborn Historical Commission, has helped bring about the growth of a fine city museum complex. More than 30,000 people now visit the recently restored Commandant's Quarters and the McFadden-Ross House annually to view ever-changing exhibits or take part in educational programs. "The Dearborn Historian" is published quarterly in an effort to spread a sense of history throughout our community.

But, if our museum program is to continue to flourish and grow, we need more citizen help. Family records and artifacts are needed so that our collection and knowledge may be expanded. With your help, we will be able to continue building a living picture of Dearborn's proud past for the benefit of our residents of today and tomorrow.

*John B. O'Reilly*

# THE DEARBORN HISTORIAN

VOLUME 20

AUTUMN, 1980

NUMBER 4

## TABLE OF CONTENTS

Fair Lane: Henry Ford's Estate <i>Susan A. Howcroft</i> .....	Page 97
Early American Pressed Pattern Glass <i>Evelyn Reardon</i> .....	Page 108
Muse Editorial.....	Page 111
School Sketches - Part XV <i>Tara B. Gnau</i> .....	Page 112
News From The Museum.....	Page 114
Recent Donations.....	Page 116
Index to Volume 20.....	Page 119

Published by

Dearborn Historical Commission  
915 Brady Street  
Dearborn, Michigan 48124

Winfield H. Arneson, Editor

*COVER: Our cover photograph this issue is of Clara and Henry Ford standing in front of the massive wrought iron gates which lead to the English Garden during the late 1930's. These gates were brought to Fair Lane after Mrs. Ford expressed an interest in them while on a trip to England.  
Photograph: Courtesy of the Ford Archives/Henry Ford Museum, Dearborn, Michigan.*

*ART WORK: by Mary V. MacDonald, Curator of Exhibits*

*Contents of THE DEARBORN HISTORIAN may be reproduced if consent is received and credit given.*

THE HERITAGE OF THE PAST IS THE SEED THAT BRINGS FORTH THE HARVEST OF THE FUTURE  
...The National Archives, Washington, D.C.



JOHN B. O'REILLY  
MAYOR OF DEARBORN

#### CITY COUNCIL

Marjorie A. Powell  
President

Dr. Van D. Mericas  
President Pro Tem

Thomas D. Dolan  
Duane W. Yinger  
Michael A. Guido  
John A. Pazzanese  
Michael J. Banich

#### HISTORICAL COMMISSION

Lester A. Twork, Chairman

Elizabeth Albertson  
Iris Becker  
J. Robert Dawson  
Nancy Haapaniemi  
Richard Hagelthorn

Rosemary Jefferson  
Andrew Petrere  
Jessie Schneidewind  
A. L. Spooner  
Michael "Jack" Tate

#### HISTORICAL MUSEUM STAFF

Winfield H. Arneson, Chief Curator

Marguerite Alverson\*  
Aurelia Barnes\*  
Donald V. Baut  
Frederick S. Dapprich  
Tara B. Gnau

Mary V. MacDonald  
Barbara Malleck\*  
Bertha M. Miga\*  
Virginia Sherk  
Helen M. Short

Raymond Yagelo\*

\*Denotes part time

# FAIR LANE: HENRY FORD'S ESTATE

Susan A. Howcroft

*[EDITOR'S NOTE: The Historical Commission and Museum Staff are always pleased when researchers make use of the extensive community Historical Records as housed at the Historical Museum. It is also gratifying to publish papers which are an outgrowth of materials the public has written as a result of research at the Museum. The following paper, "Fair Lane: Henry Ford's Estate," is partially the result of work done by a former student at the University of Michigan - Dearborn, Susan A. Howcroft, in 1975. You will note at the end of the article, references to physical changes in the area which now have become realities.*

*Henry and Clara Ford's Fair Lane home is a significant part of Dearborn's heritage - largely because it reflects much about the personalities of people who were a notable segment of our American saga.*

*For further reading about Fair Lane as published in THE DEARBORN HISTORIAN, see also "Fair Lane Dedication" by Iris M. Becker in Volume 18, 1978 (pp. 113-116) and Volume 19, 1979 (pp. 22-24). W.H.A.]*

Henry Ford's last home, Fair Lane, is located north of Michigan Avenue and west of the Southfield expressway in Dearborn, Michigan. About a mile from his birthplace, and World Headquarters of the Ford Motor Company, and five miles from the Rouge Plant, the 1369-acre estate sets nestled on the north bank of the once-beautiful, now polluted Rouge River.

Construction on the estate began in February, 1914, just after Ford established his eight-hour, five-dollar day, and was not completed until late in 1915. During the construction period as few as five to as many as eight hundred men were employed.

The firm of von Holst and Fyfe of Chicago was the first architect employed to build Fair Lane. However, a dispute, and later a lawsuit, arose between Mr. Ford and Messrs. von Holst and Fyfe, and a new architect William H. Van Tine of Pittsburgh was hired to complete the work. There has been some speculation that the house was designed in the style of Frank Lloyd Wright. Justification for this speculation might have been found in the fact that in October, 1910, Wright sold part of his practice to von Holst.

Mr. and Mrs. Ford moved into their 56-room home in January of 1916. The two-story Marblehead-limestone mansion was equipped with 15 baths, a bowling alley, eight fireplaces, and a swimming pool. Each block of gray limestone was individually cut to the specifications of the architects.

The mansion's design can be described as modified early English, but it really looks more like a small castle. The outer walls vary from eighteen to twenty-four inches thick, and the inner walls are fourteen inches in thickness. The mansion is two hundred feet in length and has 31,770 square feet of floor

space.

The drive from the main gate to the mansion is almost one mile long, and the tree-shaded road makes the approach to the secluded residence peaceful and picturesque. The Ten Eyck Tavern and the toll gate for the plank road to Detroit once stood at the entrance. Four markers on Michigan Avenue identify this historic site.

Ford started buying the land which would comprise his estate at the turn of the century. The Black farm and the Ten Eyck farm were purchased in 1908, and by 1909 he owned more than 2,000 acres in the Dearborn area.

Besides the mansion, he eventually built on the estate numerous out buildings: a gate house, power house, private work shop, sand storage shed, tool shed, boat well, pump house, skating shanty, sugar shack, maple syrup house, peacock house, chicken house, play house, gardener's house, chauffeur's house, butler's house, Santa's work shop, Troupe House (with garage), Cousens House (with garage), and a few barns. Most of these auxiliary buildings are now gone.

Perhaps the most interesting of the aforementioned conglomeration is the power house. The corner stone of this experimental laboratory, garage, and power plant was laid by Ford's close friend Thomas A. Edison on August 26, 1914. The power house was constructed with the same materials and designed in the same style as the mansion at a cost of approximately \$244,000.

The estate is now serviced by public utilities, but at one time the electricity, heat, water, and telephone facilities were supplied by Ford's private utility source - the power house. The power source for the power house was a fourteen foot dam in the Rouge River. The power house contained the switch-board to the estate's sixty-five telephone extensions. It purified the water of the River Rouge and supplied the house with hot-cold, fresh-soft running water. During emergencies the power house could furnish all of Dearborn with water.

The two furnaces in the generator room were still operative until last year when condemned. Two 55-kilowatt water-powered generators provided the estate's electricity. As a back up source, there was an emergency steam generator and an emergency hook-up to the public utility system.

On the night Henry Ford died, April 7, 1947, the River Rouge flooded the power house. Water in the lowest floor of the power house was fifty-two inches deep, the deepest it has ever been, and in spite of these precautionary emergency facilities there was no electricity or telephone at the mansion that night.

As just described, on the first two floors of the power house were the wheel and generator rooms. The third level was a 12-car garage. Henry Ford's personal laboratory occupied the fourth floor. He often went from the garage or laboratory to the mansion by means of a three hundred foot underground tunnel seven feet high and eight feet wide. The tunnel conveyed all the power from the power house to the mansion via more than twenty pipes of various sizes.

At the time the contract to build Fair Lane was transferred to Van Tine

the sum of \$142,300 had already been spent, which is more than one-half of the amount Ford had originally wanted to spend on the house. In the end the cost of Fair Lane was close to \$2,000,000 - at 1916 price levels!

Money was even spent on improving the Rouge River. The banks of the river near the residence were protected by stacked slabs of stone. Behind them were the extensive gardens, including Mrs. Clara Ford's famous Rose Garden.

Spread around the residence and the grounds in addition to a rose garden, there was a peony garden, an iris garden, a blue garden, a rock garden, a trail garden, a grotto, and a manmade lake. The rose garden covered almost three acres. It was closer to the size of the par three on a golf course than a rose garden - even a billionaire's rose garden. Many people came to walk through the gardens, including members of "The American Rose Society," and other clubs of a similar interest. The settings for these garden visits were sometimes quite elaborate. Mrs. Ford would have lunch served under a canopy, and either before or after the meal would walk through the gardens with the visitors. The rose garden had twelve thousand plants in three hundred varieties. At each end of the garden was a pergola. In between was a rectangular pool and two oval ponds with a rill connecting the two.

People wrote to Mrs. Ford from all over the country to share their common interest in gardens and to recommend flowers, especially roses. Once flower enthusiasts even named a new tulip variety after Mrs. Ford in 1950.

In front of the mansion was a circular driveway and to the left was the iris garden. As one might surmise from its name this garden was planted almost entirely with irises except for an encircling border of tall lilac bushes.

The rectangular English garden was separated from the iris garden by a 9'6" by 7' lilac-covered iron gate from an old estate in England. Accompanying the lilac hedges were roses, Japanese cherry trees, grass grown slate walks, a tea pavilion and a tiny pool.

A smaller garden called the Burroughs Grotto was built into the hillside between the English garden and the river. It was named after and dedicated June 8, 1916, to the American naturalist and good friend of Ford's, John Burroughs. It contained a life-like statuette of Mr. Burroughs done by sculptor C. S. Pietro which was placed in the garden in 1918. It remained there until sometime after Mrs. Ford's death when it was stolen.

The Blue Garden was said to be Mrs. Ford's most-loved garden because it was done in her favorite color. This garden hugs a back south side angle of the house and was planted almost completely with blue flowers. Later other colors were added, but it is still called the Blue Garden.

The trail garden starts at the north terrace and winds lazily for a quarter of a mile. The trail is intermingled with flora and fauna and fades into the rose garden. A fairway size lawn, Sunset Path, ends at the artificial lake. The lake has a small brook running off from it connecting to the Rouge River, and an old-fashioned stone bridge once crossed the brook. At one time a skating shanty was located here. A tree-root infested path, which is used as a nature trail, now encompasses the scenic lake.

In front of the house on the opposite side of the driveway is a large peony garden with almost forty different varieties.

On the sloping bank of the river is a rock garden. Little stone paths work their way down the hill to a pool that once contained goldfish. Adjacent to the rock garden is an inlet that housed the underground boat well. Here was the home of the Callie B, Mrs. Ford's electric boat. Callie B was Mr. Ford's pet name for Clara. Mrs. Ford was fond of taking the Callie B out for spins on the Rouge River.

Fair Lane, named after an area in Ireland where the Ford family originally had a home, was centered in a 9,000-acre farm with eighteen hundred bird houses. Five hundred of these bird houses were on the estate. Especially interesting was the "Hotel Ponchartrain" with its seventy-six bird apartments. There were even electrically heated birdbaths. Peacocks roamed the grounds, occasionally harassing gardeners as they mowed the lawn.

With its meadow, artificial lake, apple orchard, and wide diversity of trees and shrubbery, Fair Lane was a natural wildlife sanctuary. The Fords loved nature and were avid bird watchers. Ford once even had birds shipped in from England. Deer wandered freely around the grounds along with other smaller animals: woodchucks, fox, raccoons, rabbits, squirrels, chipmunks, and big mud turtles that crawled out of the Rouge onto the banks. Even today the meandering Rouge River is the home of many small animals and birds.

John C. Moniger Company of Chicago built the greenhouse in which green beans, brussel sprouts, cabbage, celery, cucumber, corn, egg plant, lettuce, onions, peppers, peas, broccoli, beets, lima beans, squash and tomatoes grew. Mrs. Ford liked to collect recipes, and the library had a number of cookbooks to round out its collection of famous authors. Her voluminous mail included not only tips on flowers and gardening, but an endless array of special recipes and preserving techniques too.

Charles and Anne Lindbergh, Thomas Edison, John Burroughs, John D. Rockefeller, Jr., George Washington Carver, and the Prince of Wales are a few of the famous people to have visited Fair Lane. By and large, however, the Fords' home was their retreat and not a great deal of entertaining went on there.

From the circular driveway the porte cochere leads to the entrance hall. To the right is the library which once contained an impressive book collection. Such authors as Twain, Dickens, Dante, Emerson, Holmes, Homer, Keats, Poe, Shakespeare, Shelley, Thoreau, and Wordsworth had a place on the shelves in the Ford Library. With its decorative curved handplastered ceiling from an old English manor, oak book shelves (large enough to keep four thousand volumes), and fireplace the library has a warm, scholarly atmosphere.

Looking out from the library door is a massive intricately-carved oak staircase which leads to the huge stained-glass window and eventually to the second floor. The panes in the window represent pages from the McGuffey Reader. The lower middle pane contains a verse typical of Ford the man:

To know one is given  
Right of delay

Noted in heaven  
Passeth each day  
Be not thou fruitless  
Work while ye may  
Trifling were bootless  
Watch though and pray.

The entrance hall opens into the living room by means of a huge archway. The living room has its own white and gray marble fireplace and its own fireplace quotation:

If I were sure of thee  
Sure of thy capacity  
Sure to match thy mood with thine  
I should never again think of trifles.

Originally panelled in French walnut the room was painted in the 1940's because Mrs. Ford wanted the room to look more cheerful.

In a chamber between the library and the living room off the entrance hall once stood a \$30,000 pipe organ. It was later taken out by Ford and the room was used for storage.

Leading off from the living room to the left with a view of the blue garden and the river is the dining room. Two very large sliding mahogany doors shut off the dining room from the living room. The walls are all done in mahogany with rose leaf mottling. The ceiling is high, approximately 15 feet, and has a pattern on it.

The music room and billiard room also lead off from the living room. Both rooms contain fireplaces, but the one in the music room is the most impressive in the whole mansion. The music room is slightly sunken and one steps down to enter it. The fireplace stands in the center of the south wall. It is twelve feet high and ten feet wide. Made out of dark-green marble and sculptured Italian walnut the quotation on its four pillars is one by Robert Herrick:

Gather ye roses while ye may  
Old time is still a-flying  
For the same flower which blooms today  
Tomorrow will be a-dying.

Immediately outside the windows of the music room is a stone terrace with a small stone pillar fence and a fountain.

Next to the music room is the billiard room which had hidden cue racks and a specially made light-gray cloth pool table. A unique feature of the mansion is its castle type tower which adjoins the three rooms in the north-west corner: Henry Ford's bedroom on the second floor, the field room on the lowest floor and billiard room. This tower had seven bay windows on each level and provides a tranquil view of the murky green Rouge River from any of the three rooms. Seldom used for billiards the room was later converted to provide Mrs. Ford with a private study.

The swimming pool was in the southeast wing. In the early 1950's it was

carefully filled in with sand and covered in concrete so that the Ford Archives could use the area to store documents. When Henry and Clara Ford lived in the house the blue 20 by 40 foot swimming pool had a fountain at one end, green marble scum troughs, heated marble benches, and a windowed ceiling.

The kitchen, as is common in most homes, was located on the first floor, but that is about the only analogy that can be drawn between Henry Ford's kitchen and almost anybody else's. The refrigerators were kept cold by pumping brine in from the power house. Along with the kitchen there was a butler's pantry. And, of course, there was a butler and a second butler, cook, maid, chauffeur, gardener, gate keeper, and a houseman. These employees were permanent except for the cooks, who kept leaving for better paying positions. The number of employees were usually substantially higher. At one time there were 15 gardeners working on the 60 acres of lawns.

Because the mansion was built on a sloping riverbank the basement on the river side is fully exposed and thus resembles a three - rather than a two-story house from that perspective. The field room, or rustic room as it is now called, is one of the nineteen basement rooms. It has an old-fashioned plank floor and handcarved wooden cornices. The fireplace was made from the brick and stone of the legendary Ten Eyck Tavern that stood not far from where the gate house now stands. This fireplace also has a fireplace quotation on it carved in the mantle:

"Chop your own wood, it will warm you twice"

Henry David Thoreau

Similar to a log cabin in style the walls are made of cypress logs. Directly under the billiard room, the field room has the benefit of the tower and a step up will put one in reach of the afternoon sun coming through the seven windows in the bay.

The bowling alley and the iron gate entrance to the tunnel which leads to the power house are located in the basement. Actually, the billiard room, swimming pool, and bowling alley were meant for Edsel and were almost never used by his parents. The Fords preferred the sun porch at the back of the house with its wicker furniture and view of the river.

On the second floor were seven bedrooms each with its own bathroom. Henry and Clara Ford's bedroom was immediately above the billiard room in the tower corner of the mansion. Because of the elevation the view from the tower bay windows in the Ford's suite is perhaps the best in the entire house. Both upstream and downstream are clearly visible. The scenery must have been breathtaking when the gardens were better attended and the Fords lived there. Now, though still a beautiful sight, the Rouge River is in decline and debris is piled on its banks. There are two dressing rooms off the main suite, and off from each dressing room is a walk-in closet. Hidden away behind one of the doors is a safe. In Henry's dressing room the ten doors and numerous drawers have not been painted and the richly varnished wood still shines. Some of the doors have full length mirrors on them and the drawers slide open easily even though it has been almost a quarter of a century since they may have been used. The silver fixtures, however, are tarnished.

This room contains another of the eight fireplaces. Smaller than most of

the others it is done in white marble with a decorative flower inlay in green and white. Two doors give access to a balcony that runs along the back of the house. The Fords sometimes slept on it.

Edsel Ford's room was also located on the river side of the house, but at the far end of the hall and was slightly smaller than that of his parents. It came complete with its own fireplace, bathroom, and dressing room. The view from his room was of the blue garden and downstream. Edsel lived in this room less than a year before he married and left home, but it has always been called "Edsel's Room."

The Edison Room is across the hall from Edsel's. This is the room occupied by Mr. and Mrs. Edison when they visited the Fords. Its ceiling, woodwork, and setting resembles a chapel. Besides the standard walk-in dressing room and bathroom this room has a carved wooden window seat that looks down into a very small court. The remainder of the upstairs rooms were guest rooms.

The mansion also had a fur storage closet, compressed air outlets for drying hair, and servant quarters.

Charles of London redecorated the mansion in the 1920's. But even before this prestigious firm added its touches to the home Henry Ford must have spent quite a sum on furnishings. The price on one 1918 list of more than fifty rugs purchased by Mrs. Ford was \$57,000 plus. The home contained some fine and unusual rugs including a 14 by 23 foot Khiva Bokhara rug in the library, Satouk carpet of Persian weave in the living room, Meles rug of south Persia work in the music room, and two Lavers rugs in the dining room - one 11 by 17 feet and the other a huge 22 by 24 feet.

After Mrs. Ford died most of the furnishings were sold by order of the Executors: Henry Ford II, Benson Ford and William C. Ford. The English and American furniture, rugs and decorations, as described by the auction catalog, were sold on October 17, 18, 19 and 20, 1951 by Parke-Bernet Galleries, Inc. in New York.

The gate house, which guards the Michigan Avenue entrance to the estate, is one of the few auxiliary buildings remaining. It is designed in a similar style and built of the same Marblehead limestone as the main home and power house. The one-story, five-room gate house has a gable red-tile roof, full basement, bay window, and natural fireplace, and is reminiscent of a quaint English cottage.

The sugar house, used for making maple sugar, was formerly the Old Bellow<sup>x</sup> (PREHN) cabin and dated back to at least 1863. The road that ran close by used to be the Pottawatomie Trail used by the Indians traveling along the river. Today it is called the Ann Arbor Trail. The log-cabin sugar house had only two rooms on the lower floor, oblong sixteen pane windows, and a tiny loft.

The grounds also had a play house for the children. It was a multilateral building with a conical roof. The windows extended from floor to ceiling with benches just inside. Sunken in the middle of the floor was a sandbox. The children were also entertained at a small log dwelling called Santa's work shop. At Christmas time the cottage was decorated just as Santa Claus' real work shop might be (including two live reindeer). Ford's four grandchildren

*x Bellow girl a Prehn  
as per Mrs. Prehn 3-2-81*

visited there, and were given toys by a man in a red and white suit.

There was a tree house in an old oak a few hundred yards from the mansion where Henry Ford would sometimes meditate. And what estate would be complete without a well? Fair Lane had one.

Ford died in 1947 and in 1948 his entire estate was valued at \$70,000,000 for tax-paying purposes. In his will he left Fair Lane to his wife, Clara. Clara lived there till her death on September 30, 1950. The Ford Motor Company bought Fair Lane from the Ford estate for the very reasonable sum of \$2,600,000 on March 5, 1951.

Fair Lane became the depository for the newly-established Ford Archives on May 7, 1953. Lawyers, executors, and archivists invaded the place after Mrs. Ford's death and their find was tremendous. It seemed as if the Fords saved everything. Over five million letters and personal and company papers were discovered along with twenty-five thousand photographs. Loose cash and uncanceled checks, almost \$40,000 worth, were scattered throughout the mansion. Some of the money was used by Ford as bookmarks! One small basement room held nothing but hundreds of wicker baskets.

There were some ten thousand unopened letters with postmarks dating as far back as 1915. It appears Mrs. Ford should have let her personal secretary answer some of her letters instead of insisting upon doing it herself.

A 1934 fan letter from John Dillinger was even found:

"Hello Old Pal:

Arrived here at 10 A.M. today. Would like to drop in and see you. You have a wonderful car. It's a treat to drive one.

Your slogan should be drive a Ford and watch the other cars fall behind you. I can make any other car take a Ford's dust.

Bye-bye

John Dillinger"

Also found was a letter from Robert R. McCormick of the Chicago Tribune. In 1919 the paper had called Ford "an Anarchist," after which Ford sued for \$1,000,000. The auto king won the court battle, but received only six cents in damages. Nobody had known that this letter existed, except the parties involved, before the "Fair Lane Papers" were opened.

"July 30, 1941

Dear Mr. Ford

It occurs to me on this your birthday, to write you and say I regret the editorial we published about you so many years ago. I only wonder why the idea never occurred to me before.

It was the product of the war psychology which is bringing out so many similar expressions today.

I am not planning to publish this myself, but you are perfectly welcome to use it in any way you wish.

Yours sincerely

Robert S. McCormick"

Many of Mr. Ford's "jot books" were found in the mansion. He used these small notebooks to jot down fleeting thoughts. Some of his notations were quite amusing and perceptive:

"He took misfortune like a man - blamed it on his wife"

"A feeling of safety kills ambition"

"Don't find fault find a remedy"

"Man's own genius is causing his own destruction"

When Fair Lane became the Ford Archives the swimming pool was meticulously filled in so that if it was decided later to restore the pool it could be done without any damage to the pool. Forty rows of steel shelves filled with "Fair Lane Papers" were stacked in the pool area. Bound volumes of the New York Times were placed in the former bowling alley. Many other rooms became offices for the archivists and other employees.

Fair Lane was open to the public in 1953, the year of Ford Motor Company's fiftieth anniversary. In December of 1956, the mansion, 210 acres of the Fair Lane Estate, and \$6,500,000 was presented to the University of Michigan to establish the Dearborn Campus of the University. Seventy-five additional acres were donated to Henry Ford Community College. The Ford Archives is now located in the west wing of the Henry Ford Museum at Greenfield Village.

The Women of Fair Lane conducted tours of the mansion and grounds between 1963 and 1966. These tours were discontinued in 1966 because of a disagreement between the University and the women over how the \$36,000 they raised in admission fees would be spent. The University wanted the money to be used for maintenance. The Women of Fair Lane, however, wanted it to be used to rehabilitate the estate.

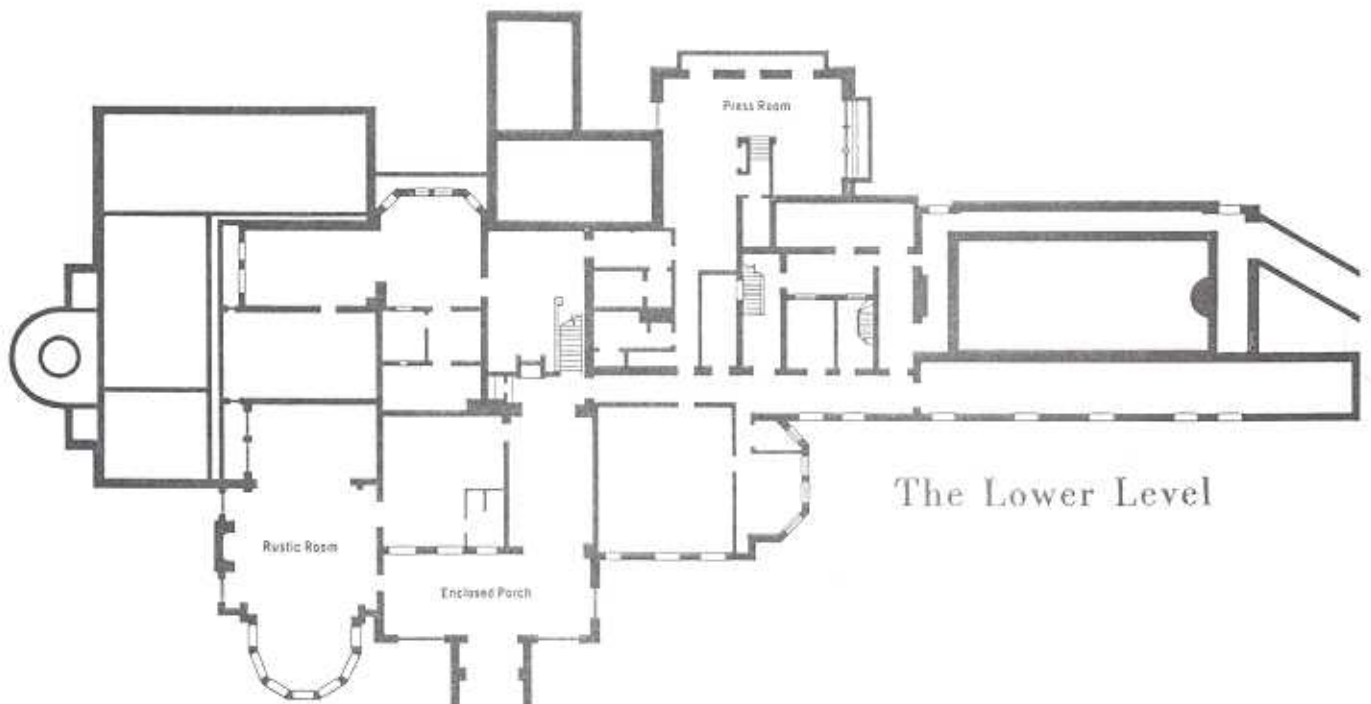
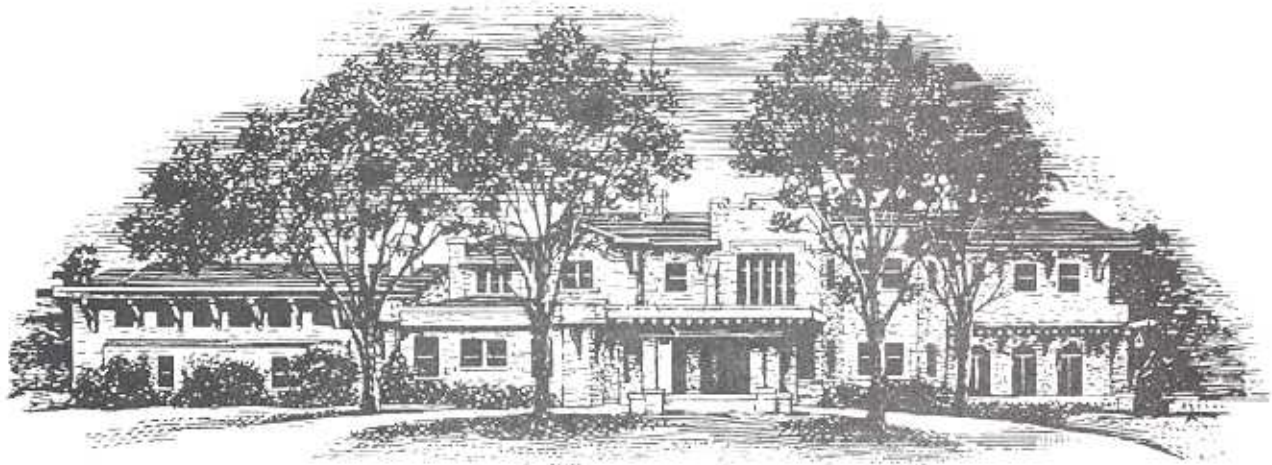
In 1966 Fair Lane was designated as possessing exceptional value in illustrating the history of the U.S. and became a Registered National Historic Landmark. A plaque commemorating this event is embedded in a pillar near the front door. The Ford Motor Company Fund made a gift of \$50,000 to refurbish Fair Lane in 1967; and more recently an effort has been made to raise money to restore some of the lost luster of the house and grounds. Tours (Sunday only) were reinstated last summer and a search is being made for the original pieces of Ford furniture sold by Parke-Bernet Galleries in 1951.

Today the mansion, as the Fair Lane Conference Center, is used as a conference site for the faculty and the student body of the University of Michigan. Business, labor, professional, educational, civic, cultural, service, and community groups also use the facilities for conferences and seminars.

Springing up around the grounds of Fair Lane are the buildings of the \$750 million Fairlane land development project of the Ford Land Development

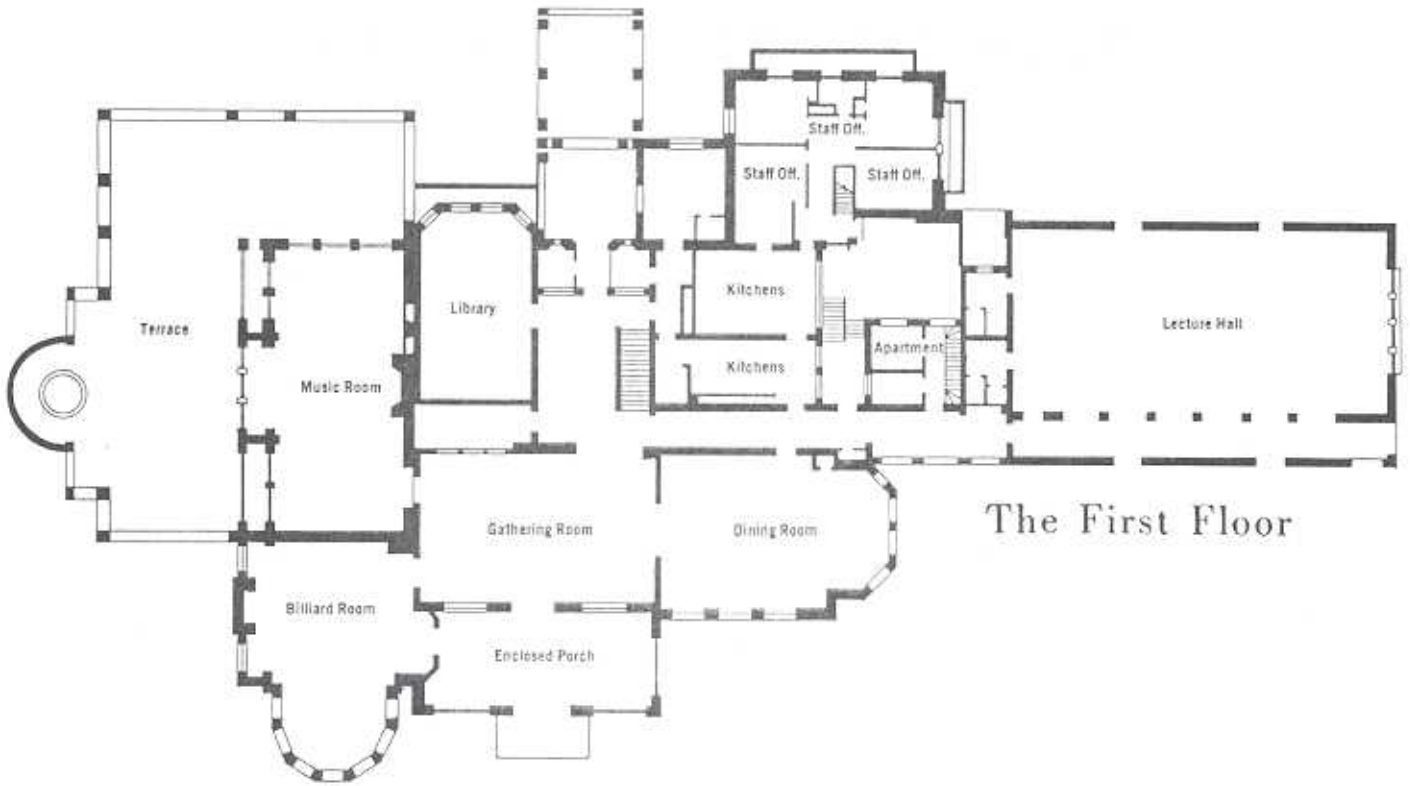
Corporation. The background behind the quaint English gate house is no longer that of field and trees; for history has been dwarfed by man's continuing efforts in the way of progress. Gleaming copper windows now provide the skyline for the gate house. Bulldozers have encroached on the grounds. The tree-shaded private drive to the mansion already has a treeless gap where the land has been plowed over. It is amazing and wonderful to see the old standing so close to the new, but let's hope they both survive in peace; and that Fair Lane and the history Henry Ford made there and left there is still there in 200 more years.

\*\*\*\*\*

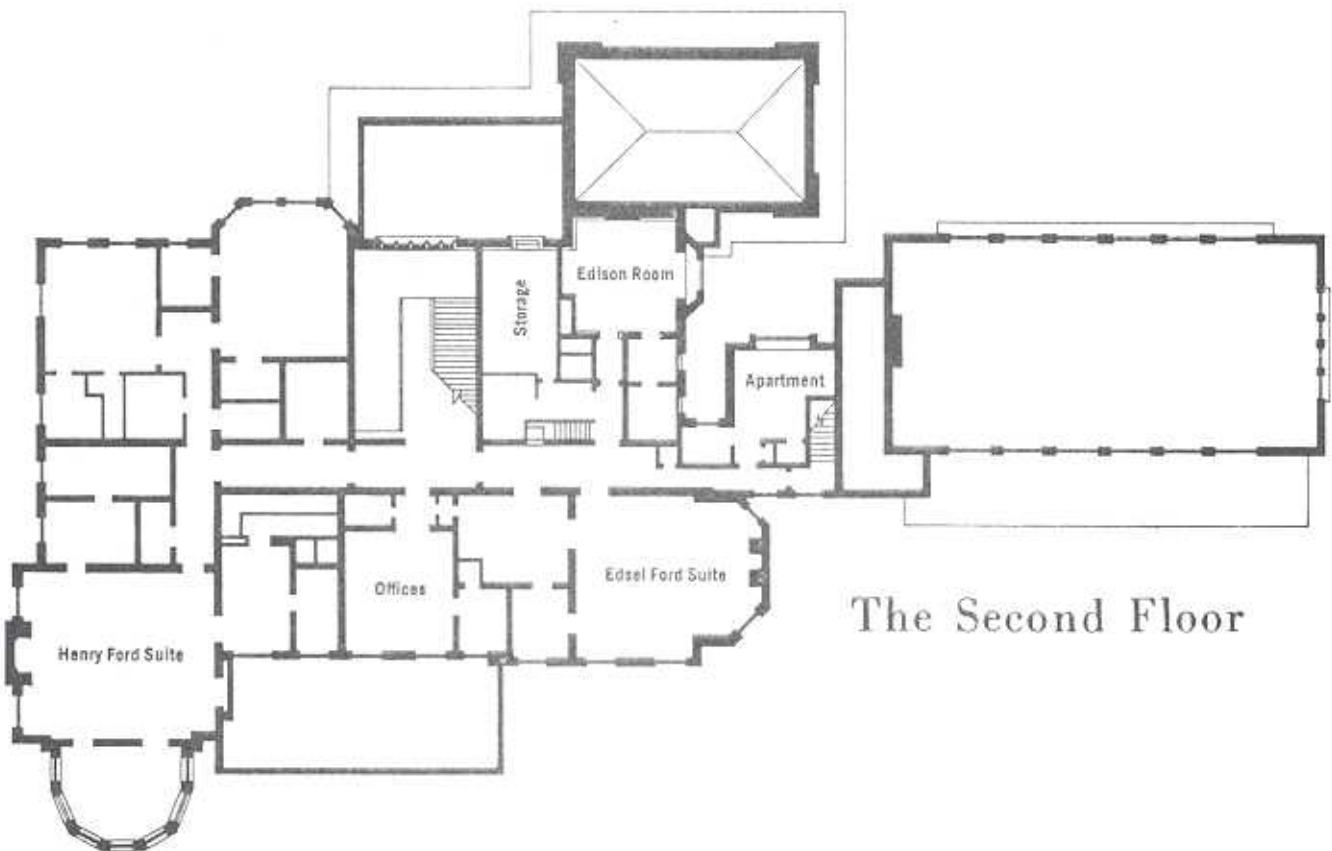


The Lower Level

*Above sketch of Fair Lane Mansion and the three floor plans on this page and on page 107 published through courtesy of Henry Ford Fair Lane Conference Center, Dearborn Campus of the University of Michigan.*



The First Floor



The Second Floor

## EARLY AMERICAN PRESSED PATTERN GLASS

Evelyn Reardon

[EDITOR'S NOTE: "Early American Pressed Pattern Glass" is another article in a series written by members of the Cherry Hill Questers, a Dearborn chapter of the National Questers organization, and a member organization of the Museum Guild of Dearborn.

*Evelyn Reardon's paper is an informative account of a type of glass unique to America. The Historical Museum has some representative pieces of this type of glass in its collection but is always interested in additions through the concern of the public. W.H.A.]*

Very little glass made in the 1600's is positively known to have survived the years. History tells us that Captain John Smith brought eight European glass blowers to the new colony in Virginia in 1608. What happened to this Jamestown glass house no one knows, as no records are available to us. In 1640 we know that a glass house was built in Salem, Massachusetts. Also William Penn mentions a glass house on the outskirts of Philadelphia. Others were the National Glass Co. of Pittsburgh, Pennsylvania, Northwood Glass Co. of Indiana, Pennsylvania, and Northwood Companies at Steubenville, Ohio, Martins Ferry, Ohio, and the Kramer Glass Co. of Pennsylvania. Bottles and beads were probably the first pieces of glass to be made in this country.

The rare glass of the 1700's made in America is found primarily in the museums or only in private collections. Major products of the early Casper Wistar glass house (1739-1780) were bottles and flasks. Early pattern molded and engraved glass is generally attributed to William Henry Stiegel (1763-1774); John Frederick Amelung's glass (1787-1795) often featured presentation pieces, many with engraved inscriptions.

Window glasses and bottles were the main products of the American glass houses between 1800-1812. After the War of 1812, when imports of glass were being curtailed, domestic glass manufacture began expansion which continued until 1817, when the country was in the throes of a depression. This lasted until 1820 and the American glass makers were having a struggle to survive. Approximately half of the United States glass houses failed between 1815 and 1820. Bakewell and Co. was established in Pittsburgh in 1808, with its first product being cut and engraved table glass and free blown and molded glass. This company was later to become the Bakewell, Pears and Company. By 1819 the New England Glass Company at Cambridge, Massachusetts, began its illustrious career. Blown-Three Mold Glass was developed around 1820, the glass being blown into molds which had cut glass patterns incised on them, often the molds being in three parts, hence the name. However, it was not until around 1828, when the mechanical glass pressing machine was improved, that glass was made in any great quantities in this country.

Early glass was blown into the desired shape from the blowpipe of the glass blower, the glass being held on the pontil rod during the blowing process. This is called "free-blown" or simply "blown" glass. Sometime later

the mold came into use and the molten glass was blown into the mold, which gave it a design or pattern, then removed and blown off-hand, expanding the glass metal into the desired size. The pattern of the mold spread out and stretched affecting the outline of the pattern accordingly. This we refer to as "pattern-molded" glass. Early in the 1800's, the hand-press came into use, and glass was pressed into the molds. The invention of the mechanical glass pressing machine in the late 1820's revolutionized glass manufacturing techniques by forcing the glass metal into the molds by a mechanically driven plunger. These molds made of brass, iron, or other metals, came in one, two, three or four parts. Many pieces were turned out as compared to the earlier process, and lower prices resulted, making glass easily available to the public. This glass is known as pressed pattern glass and is widely collected.

The earliest patterns of pressed glass were made in imitation of cut glass designs to compete with the foreign cut glass being imported. Cut glass had always been popular. However, the styles soon changed to a lacy effect, with fine stippling, many with intricate designs. A great deal of this glass was made at the Sandwich Factory, but it was also made at the other glass houses, both in the East and in the Middle West, although we seem to refer to this type of glass today as "Lacy Sandwich." This is especially true of the small cup plates and salts. There was a large market for cup plates, which were used to set the cup in after pouring the hot liquid into the saucer, and perhaps over a thousand different patterns in these plates were made, most with lacy backgrounds, made in heart, naturalistic and geometric designs. Their popularity continued until 1840. While each collector would like to know where each pattern was made, definite attribution is not often possible. There were too many variations of designs and so much of it was made, with very little marked. Mold makers no doubt sold molds of the same patterns or with slight variations to glass makers who did not have their own mold departments.

In the late 1840's and early 1850's, a trend began toward the production of complete table settings in various patterns, which continued into the late 1860's. The earliest of such patterns were simple and heavy looking, mostly in combination of loop and ovals. Ashburton, Loop, Thumbprint, Colonial, Excelsior, Victoria, Huber, and many other similar patterns were made in table sets of goblets, sugar bowls, pitchers, celery vases and various size compotes, both with and without covers. Here again the same patterns, with slight variations, were made by more than one manufacturer, especially if the pattern was a popular one. Each factory had their own trade name for their pattern, which results in confusion among collectors today. The very popular patterns were made in both the East and the Middle West and often the place where the pattern originated is not known. Many of these patterns continued in popularity until the 1860's and 1870's. By the 1860's, however, the patterns became much more elaborate and ornate, more intricate in detail, and patterns such as the Horn of Plenty, Bulls Eye pattern, also various ribbed patterns, such as ribbed Bellflower, Ribbed Palm, Ribbed Loop, etc., enjoyed popularity. A successful formula for soda lime glass was invented in 1864. Most of the glass factories, faced with stiff competition began using the soda lime formula, and before long this superseded the fine lead or flint glass and the quality of glass was lowered. By 1870, most glass houses were using this lime soda formula for their glass.

The trend had begun to turn toward elaborate naturalistic patterns with fruits, flowers and leaves, such as many leaf patterns, and the grape, strawberry and fruit variations. By the late 1870's patterns such as Westward Ho,

Lion, Three Face, Jumbo, and the late Victorian styles became popular, continuing into the 1890's.

In 1890 some clear pattern glass was brushed with a ruby stain, also gilt was profusely added, both to the edges of the piece and on the pattern itself.

There was very little difference in the techniques in manufacturing furniture, or china from 1830's-1890's. That is why 1830 is generally considered the dividing line between the antique and the modern. In Pattern Glass we have a technique of manufacturing, namely pressing, which was not in use prior to the time of the invention of a practical pressing machine in the late 1820's. Pressed glass made in 1880 is old in comparison to the age of the form of manufacture.

#### COLOR TERMINOLOGY

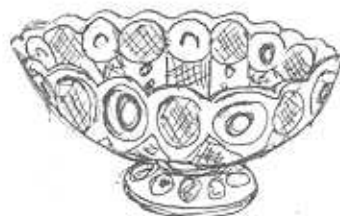
Vaseline glass is a blown Sandwich product, made in candlesticks, bottles, inkwells, etc. The similar color in table wares is termed Yellow or Canary. In light blue we use the term Sapphire; a medium dark blue, cold in tone with no red overtones, we call Electric Blue; deep blue, with red overtones, we term Cobalt Blue; in pale green, we have the similar Apple Green or Lime; in amber we have the pale shade known as Pale Amber; a medium shade known as Golden Amber; and a deep shade called Blood Amber because of its coppery overtones; a light smoky shade is known as Smoky Amber; the glass with red in the glass is the beloved Cranberry; the glass in which the red is flashed over the glass is Ruby; the glass made from red with a touch of gold in it is Amberino which at times shades to a fine deep Fuschia color; the glass which starts with greenish yellow and goes to cranberry is Rubino; Pigeon Blood is hard to describe - red with vivid overtones of a color which approximates sunlight; there is light and dark Amethyst; and a dirty muddy Amethyst which is found only in reproductions.

Early American Pattern Glass is one of our important folk arts. No other country in the world has ever produced a whole series of related table wares such as ours; ours tells the story of American life; depicts our history; our religious faith, our sense of pattern, our moods, our humor. Where but in America would one find the Goblet "Ostrich Looking at the Moon?" or a goblet with a Deer, a Buffalo and a Log Cabin, namely Westward Ho.

#### *Bibliography*

1. *Baker, Stanley, ANTIQUE TRADER.*
2. *Detroit News article.*
3. *Heacock, William, Encyclopedia of Victorian Colored Pattern Glass.*
4. *Metz, Alice, Early American Pattern Glass.*

\*\*\*\*\*



## MUSE EDITORIAL

### "FUTURE HISTORICAL MARKERS IN DEARBORN"

As you drive about the City of Dearborn you will obviously notice a variety of historical markers or plaques. Some are on buildings; some represent a certain area or complex of structures; some are inside buildings; and some are out in the open because what they now recognize is no longer standing.

The most notable markers are the large aluminum ones with a green background and gold lettering. They are the property of the State of Michigan - Michigan History Division, but are placed at their locations through local initiative and local financial sponsorship. Some of these plaques have been initiated by the Dearborn Historical Commission. Perhaps the second most recognized series of markers are those bronze ones with the distinctive United States Arsenal square. All of these plaques were placed by the Historical Commission to recognize the significance of the 1833-1875 Arsenal era which caused Dearborn's first boom.

Recently the City of Dearborn has updated its "Sign Ordinance" (No. 80-1994). The Historical Commission made arrangements to incorporate some language into this instrument so that all future markers placed within the boundaries of the city will meet basic guidelines. Keep in mind that this action was designed to improve the quality of markers and also make available any helpful information the Commission may have at its disposal in the Historical Records collection. These are the guidelines:

- . "Historical Signs and Markers shall mean plaques which tell the story of some event, personality or a combination of the two of some historical significance within the community."
- . "All historical signs and markers erected in the City of Dearborn shall receive the prior approval of the Dearborn Historical Commission. Immediately upon receipt of an application for a permit to erect a historical sign or marker the Plan Examiner and/or Superintendent shall forward a copy thereof to the Chief Curator who shall review the application with the Historical Commission..."
- . "...Historical Signs and Markers shall be esthetically attractive and recognizable by the citizenry as associated with historical subject matter. Signs and markers shall be at least 18 inches wide and 24 inches high and rectangular in shape. Larger sizes shall be permitted depending on the text and location. All signs and markers shall be made of metal to insure a long life and shall be metal post mounted or wall mounted. All signs and markers, with the exception of approved bronze plaques, shall be enameled or vinyl coated a deep brown color. Lettering shall be in a cream color. Uniformity of size, material and color are desirable characteristics to be considered by the Historical Commission in reviewing applications hereunder."
- . "All signs and markers duly approved by the Historical Commission shall be appropriately registered in City records and such signs and markers shall include, at the conclusion of the text, a reference to this ordinance."

\*\*\*\*\*

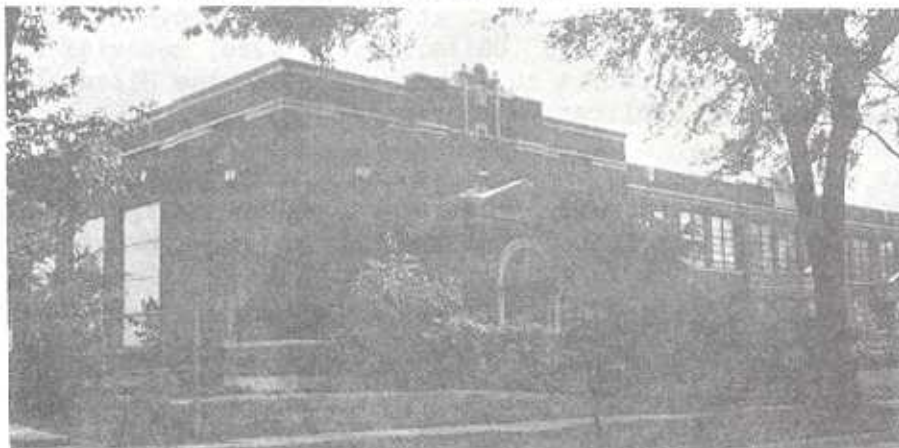
# SCHOOL SKETCHES

Part XV

## ROULO SCHOOL

Peter Roulo gave one lot to the City of Detroit in 1906 for a new school building. The lot was in Springwells Township on the border of Detroit and with an additional land purchase the Detroit Public School system was able to build the first Roulo School - a wooden two room building. The Roulo School served as an annex to the Bennett School to accommodate the overflow of primary level students. In 1920, following the establishment of the Springwells Township Schools, Roulo became a part of the new school system with two teachers and grades kindergarten, 1st, 2nd, 4th and 5th. After one year of this arrangement Roulo was again used only as a primary facility (kindergarten and 1st grade) and all older students attended Salina School. As the Springwells Township School district had rapid growth with the community, by 1925 there was a desperate need for bigger and better schools. The City of Springwells purchased more land adjacent to the Roulo School, moved two houses and began to excavate for a twelve room, one story school. The school was used as soon as possible - with students and workmen sharing hallways and space. The building was officially dedicated in 1926. Due to structural problems at Salina School (see following article) the new Roulo School was immediately overcrowded. Roulo students had classes in the morning, Salina students had classes in the afternoon and the high school students were taught wherever space could be found in the building. Fortunately, this situation was corrected by March, 1927 with the completion of construction at Salina. However, the community continued to grow and soon an addition, including a gymnasium, was planned for Roulo.

Between 1930 and 1960 the Roulo School served a constantly changing community as a K-6 facility. In 1959 the Dearborn Board of Education began to talk of closing the school. The neighborhood had become more industrial and Salina School had adequate facilities to serve the educational needs of the area. In 1961 Roulo was closed and the Board of Education talked of selling the building to the Detroit Baptist Church. The following year, however, the City of Dearborn purchased the property and leased it to the Ambassador Baptist Church. By 1965 the old school building had become a center of controversy between the City of Dearborn and local residents. Some wanted to see the building used as a community center providing counseling service, medical and dental services, meeting room and recreation facilities. Others in the area wanted the building targeted for demolition as part of the urban renewal. In 1972 a fire, caused by vandalism, sealed the school's fate and in 1979, after years of vacancy, the school was torn down.



### SALINA SCHOOL

The present Salina School is an outgrowth of Springwells District #2 school, known as the "Rouge School." The first building was a four room school at Miller and Dix which was purchased by Henry Ford before 1917 for the development of the Rouge Plant. There were only two teachers and a declining enrollment. In 1917 a new school of two rooms was built on Mulkey (now Wyoming) Avenue. The enrollment dropped to 25 students and one teacher, Anna Henn, taught all grades. The Rouge Plant caused a rapid increase in enrollment and the two room building was only used between 1918 and 1922. In 1921 a new building was begun that is the basis of the present Salina School. It was named after the street on which it was located, Salina, and consisted of 12 classrooms, auditorium, gym and boiler room. By 1922 Salina had seven teachers and served grades kindergarten through eight. Enrollment increased at a tremendous pace and in 1925 plans were made for a larger school. The addition was to include thirty-seven classrooms and a swimming pool. However, only three days before school was scheduled to open in September, 1926, part of the gym wall collapsed into the swimming pool. All students then had to attend Roulo School, with a complicated arrangement of half day sessions for both elementary and high school students. In March, 1927, students were able to return to Salina. September, 1927, marked a full enrollment at Salina of 904 students and 60 teachers. The school housed all grades including 10 graduating seniors who briefly attended the new Fordson High School. Graduation was held at Fordson in June, 1928, for students who had attended both Salina and Fordson.

Despite the economically depressed years of the '30's Salina enrollment continued to grow. In 1938 enrollment stood at 1200, grades kindergarten through nine. Physical growth of the building continued, with new band and vocal music rooms being added in 1951 and extensive renovation and modernization in 1958. Project Head Start, to prepare kindergarteners for school, was begun in 1965 and was followed by other programs designed to help disadvantaged students. In 1968 the Dearborn Board of Education began to talk of closing Salina Junior High, but in 1970 reversed its decision and the school has remained an elementary and junior high facility. In May, 1973 Salina School celebrated its 50th anniversary. The school, unique because of its bilingual programs and its location in the shadow of the Rouge Plant, continues to serve the community and looks forward to its next 50 years.



## NEWS FROM THE MUSEUM

JASON THORNBURG APPOINTED TO COMMISSION. Mayor John B. O'Reilly recently announced the appointment of Jason D. Thornburg as a member of the Dearborn Historical Commission. Mr. Thornburg replaces the late Ross M. Smith on the 12 member board.

Thornburg, a Henry Ford Community College instructor for 23 years, where he teaches business and economics, has been a resident of Dearborn for 22 years. His interest in history spans many eras. He has lectured on manuscript collections frequently in the area.

He is a member of the Manuscript Society and formerly served as secretary of the Civil War Centennial Commission (1962-1965) and vice-chairman of Dearborn's American Revolution Bicentennial Commission (1974-1976). During 1979 he was an active member of Dearborn's 50th Anniversary Celebration Commission which directed the city's yearlong commemoration.

In 1970, Thornburg received a citizen safety award for his leadership in obtaining a traffic light at the dangerous Telegraph-Rockford intersection.

A native of Flint, Thornburg served from 1944 to 1946 as an Army corporal in Europe. He returned home to earn his B.A. degree from Michigan State University in 1950; his B.S. from Eastern Michigan University in 1952; and his M.A. from the University of Michigan in 1954.

He and his wife, Jean, have three children: Lynn, a teacher in Douglas, Georgia; Ross, a senior at Hope College and Douglas, a student at Dearborn High School.

\*\*\*\*\*

MUSEUM ARCHIVIST RALPH FADER RESIGNS. In mid-August Museum Archivist Ralph Fader resigned his staff position and returned to a teaching career in Redford. Mr. Fader was on the Museum staff over four years and did a tremendous job in improving the accessibility and professionalism of the extensive Historical Records collections. Many of our regular readers were familiar with the fine articles he wrote which were published in THE HISTORIAN. Truly the educational world's gain is the loss experienced at this historical agency. The Museum staff and Historical Commission wish Mr. Fader well in his pursuits.

\*\*\*\*\*

### UPCOMING EVENTS AT THE MUSEUM:

Veteran's Day - Saturday and Sunday, November 8-9 at the McFadden-Ross House. Saturday 9:30 A.M. - 4:30 P.M. and Sunday 1 P.M. - 5 P.M. Recognition of veterans of World War I through a series of exhibits and World War I reenactment groups. An exhibit will run from November 1-26 during regular Museum hours. Both veterans of the War and young people dedicated to preserving the heritage of the times will participate. A similar event was very successful last year. All are welcome.

Christmas Exhibits - December 2 through January 10, 1981. Featured will be

the popular antique dolls, toys, games, and traditional Victorian Christmas trees.

Christmas Open House at Commandant's Quarters. Friday, December 5 from 1 P.M.- 9 P.M. Festive decorations will adorn this historic building. The Museum Guild of Dearborn will host their traditional tea throughout the day. An excellent musical feature will be arranged by Wilma Stone of the Dearborn Public Schools. Small choral and instrumental groups will perform for the visitors.

St. Nicholas visits the Museum. Saturday, December 6, between 9:30 A.M. and 4:30 P.M. St. Nicholas will make his annual visit to the McFadden-Ross House. Again, this year, this will be the first stop of a Christmas walk to visit participating merchants who will give symbols of the "Sights and Sounds of Christmas" to the children. Each child will receive a bag, candy and some other symbolism of Christmas from St. Nicholas as he or she visits the Museum. Then, the youngsters will go to the designated merchants as indicated on a map which will be provided. So, bring your youngsters for a fun event.

\*\*\*\*\*

MUSEUM RECEIVES KEEP MICHIGAN BEAUTIFUL AWARD. At a recent luncheon awards program of Keep Michigan Beautiful, Inc., at the Hilton Inn, Lansing, the Dearborn Historical Museum received a 1980 "Distinguished Service Certificate" for the McFadden-Ross House. Keep Michigan Beautiful, Inc. is a nonprofit, educational, public service organization established in 1962 by private citizens and designated by the Governor as the coordinating agency for beautification activities in the State of Michigan.

The statement read at the luncheon declared: "Since October, 1956, the McFadden-Ross Home has been opened to the public and has served the community through educational exhibits, lecture programs, use of meeting rooms and a library of historical records. Many new trees, a picnic area and an herb garden add decorative and botanic features to the grounds."

Accepting the award from Mrs. William Milliken and Keep Michigan Beautiful President Lincoln Avery were: Historical Commission Chairman Lester Twork, Vice-Chairman Jessie Schneidewind, Commissioner Iris Becker, Commissioner Rosemary Jefferson and Chief Curator Winfield Arneson.

\*\*\*\*\*

#### MORE ON "STREETS, WHAT'S IN A NAME?"

In Volume 20, Number 3 of the HISTORIAN, a slip of the pen by the author placed former Mayor Orville L. Hubbard's birth year as 1902 instead of 1903. In a phone conversation Edward Collins states that Roulo Street was named after Charles Roulo, a Dearborn French pioneer and one of Mr. Collins' ancestors. Another caller, Leigh Jackson, states that Wilson Avenue was named for his father, the late Wilson Jackson. The elder Mr. Jackson was a great friend of James Guinan, a land developer of the Cherry Hill-Telegraph area. Leigh Jackson says that Jackson Street is named for Jackson Pardee, a son of a Dearborn pioneering family and also a landowner in the area.

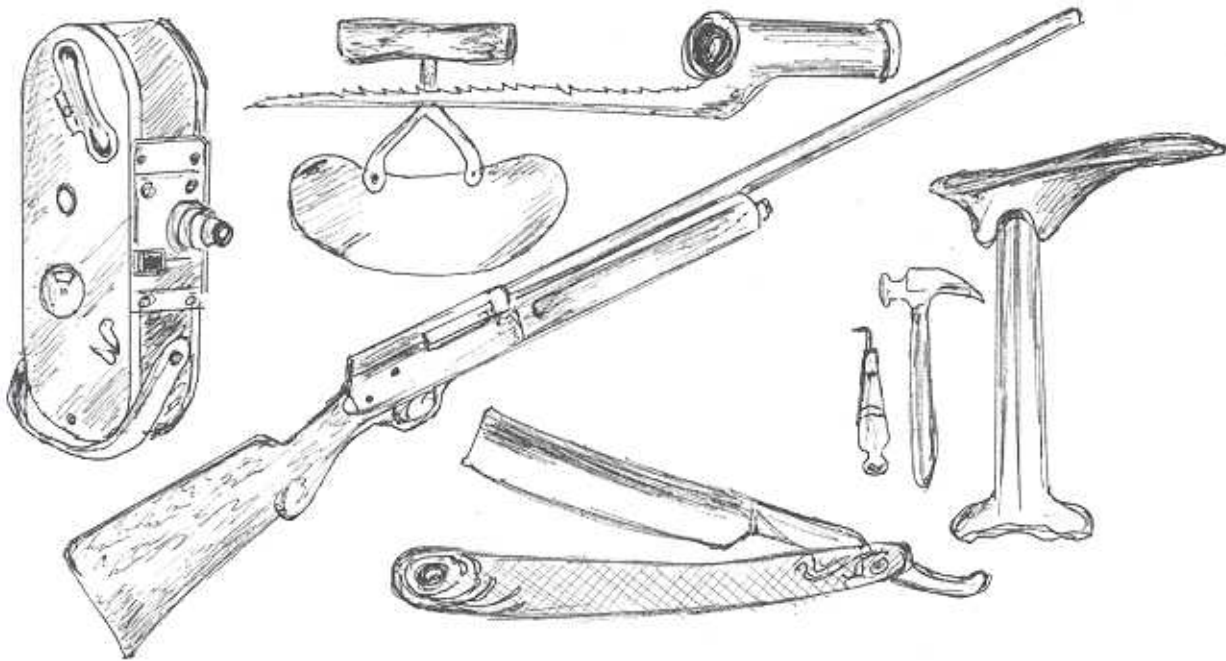
Thank you to all who volunteered your input into "Streets, What's In a Name?" There will be another article concerning this subject.

## RECENT DONATIONS

Dress, ca. 1920's, robe and scarf	MRS. HALINA ANDRZEWSKI
Cameras and equipment	MR. CARL A. HEYER, JR.
Collection of straight edge razors	DR. & MRS. FRANK S. GREENSLIT
1907 Christmas decorations	MRS. MARIE C. NOLD
Hand crocheted tablecloth and bedspread	MRS. H. FOWLER
Women's shoes	MRS. BERTHA MIGA
Purse, compact, Chinese robe and piano throw	MS. BERTILLA SPIKER
Lady's nightgowns, ca. 1900	MRS. DUDLEY KERRY
Satin wedding dress with train	MR. & MRS. JOHN O. CHAPUT
Photograph of the Commandant's Quarters taken in 1979	1st FEDERAL SAVINGS & LOAN MR. WILLIAM J. THIESS
Photos of Oxford School demolition	MR. JOHN B. BEERS
Photos of Graham-Paige autos	MR. JOHN A. CONDE
Chrysler Corporation photos - Dearborn Plants	CHRYSLER CORPORATION MR. D. P. CHISNELL
Photos of Paige-Detroit Motor Car Co.	MR. JOSEPH A. BEDWAY
Book: FORD IDEALS, Dearborn related books and pamphlets	MR. & MRS. HENRY TUTTLE
Dearborn High Yearbook: 1980 PIONEER	DEARBORN HIGH SCHOOL
American Bicentennial medal	MR. & MRS. S. VANDERPOORTEN
Photos, Daguerreotype, ca. 1850-1860	MISS E. LUCILE WEBSTER
Evening bag, children's toys, Dearborn related booklets & exhibit items	MS. JOSEPHINE SMITH
Costume items, ironing board & child's washboard	MRS. ELLENORA THOMPSON
Marine Corps ring with old City of Dearborn seal	MR. STEPHEN H. HOFFMAN
Doll collection & doll carriage	MRS. JOHN MAGUREAN
Cobbler tools, ca. 1894	MR. RAYMOND J. SIMSICK

- Gothic style mantel clock, ca. 1928  
B. DUBAS
- Ca. 1870's United States Army officer's wardrobe & bound copy Harper's Weekly  
MR. JASON THORNBURG
- Ca. 1850's swords, bayonet, guns & a collection of war related scrapbooks, articles and album  
MR. FORREST PYKE
- Queen Elizabeth I doll made for the National Quester Convention  
MRS. VIRGINIA TURZA
- Souvenir items from the Republican Convention and Festival of Wheels  
MUSEUM GUILD OF DEARBORN
- Typewriter, ca. 1920's  
MR. KURT W. FREDERICK
- Volunteer fireman's helmets  
MR. DOUG GNIEWEK
- Antique Christmas lights & roping  
MR. & MRS. PETER BENIO
- School items  
MR. ALEX GILLESPIE
- Detroit map, booklet: SCHOOL GARDENS  
MISS TARA B. GNAU
- Luncheon plates & cups  
MS. ELEANOR LaROY
- MICHIGAN MANUAL  
MRS. INEZ W. PEACOCK





Edsel Ford High School textbook compiled  
by donor

MRS. BESSIE A. STUART

Wayne County Atlas, 1876 & 1893

MR. NELSON J. COSBEY

Book: DULANY-FURLONG & KINDRED FAMILIES

MR. R. DULANY FURLONG

Henry Ford Trade School roster & random issues  
of ALUMNI NEWS

MS. SHIRLEY R. GUEST

Extensive collection of photos, press releases  
and biographical data on city officials

MR. DOYNE JACKSON  
Research & Information

NATIONAL GEOGRAPHICS

MR. EARL PREHN

Bound book of "Hello Dearborn" articles  
authored by donor, POLK DIRECTORY, Boy  
Scout handbook and photos

MR. JOHN T. SMITH

Dearborn related pamphlets, World map, 1930's  
Dearborn map

MRS. WEYONA H. SMITH

Scrapbooks relating to the Jr. Red Cross pro-  
gram at Dearborn High School

MISS DOROTHY V. WOLFE

Eyeglasses, ca. 1870

MS. MURIEL ISOM

TAPED INTERVIEW

Concerning his career at Greenfield Village  
as a textile artisan

MR. ROBERT E. KAISER

# INDEX TO VOLUME 20, 1980

## GENERAL INDEX

## ILLUSTRATIONS INDEX

### GENERAL INDEX

#### A

##### ACCESSIONS:

SEE EACH ISSUE FOR DONATIONS

ADAMS JUNIOR HIGH SCHOOL: 1980,  
#1, 6

"AMERICAN REVOLUTION WAR, THE, -  
SOUTHERN THEATRE" by Lawrence C.  
Sheppard, 1980, #3, 81-87

ARCHITECTS for Henry Ford:  
1980, #4, 97

ARNESON, WINFIELD H.: "Future His-  
torical Markers In Dearborn,"  
1980, #4, 111

"Surveying Dearborn Homes and  
Other Sites," 1980, #1, 17

#### B

BAUT, DONALD V.: "Streets, What's  
In A Name?", 1980, #3, 63-80

BECKER, MARSHALL: 1980, #2, 53

BENNETT & STRAIGHT ARCHITECTS:  
1980, #2, 52

#### C

CALLIE B, Electric Boat: 1980, #4, 100

CAPSULE, TIME: 1980, #2, 56

COMMANDANT'S QUARTERS: 1980, #1, 3, 6

CRANDELL, ANNA: 1980, #2, 52

#### D

DAHLINGER, RAY, FAMILY: 1980, #3, 88

DEARBORN COMMUNITY ARTS COUNCIL

(Art in the Park): 1980, #2, 56

DEARBORN CULTURAL RESEARCH SURVEY:  
1980, #1, 17

"DEARBORN'S FIRST KINDERGARTEN

CLASS" by Lester A. Twork:

1980, #1, 3-10

DEARBORN HIGH SCHOOL: 1980, #1, 7

DEARBORN HISTORICAL MUSEUM: hours  
changed, 1980, #1, 22

DEARBORN HISTORICAL SOCIETY REPORTS:  
1980, #1, 27

Fortieth Anniversary, 1980,

#2, 54-55

Heritage Day Luncheon, 1980, #2, 60

officers, 1980, #2, 60

DEARBORN HOMES AND SITES, SURVEYED:  
1980, #1, 17

DEARBORN JUNIOR COLLEGE: 1980, #1, 19

DEARBORN REALTY & CONSTRUCTION  
COMPANY: 1980, #2, 31-32, 35-36,  
40, 43

DETROIT ARSENAL:

See Arsenal, UNITED STATES DETROIT

DONATIONS:

SEE EACH ISSUE

DURHAM, LEON: 1980, #1, 10

DuVALL, LEO: 1980, #2, 43

DuVALL (SOUTHWESTERN) SCHOOL:  
1980, #2, 43

#### E

"EARLY AMERICAN PRESSED PATTERN  
GLASS" by Evelyn Reardon,  
1980, #4, 108-110

"EARLY PEWTER" by Elizabeth Milas,  
1980, #1, 11-14

EDISON SCHOOL: 1980, #2, 43

EDUCATION:

SEE SPECIFIC SCHOOL

ELECTRIC BOAT, CALLIE B:  
1980, #4, 100

#### F

FADER, RALPH G.:

resig.: 1980, #4, 114

"A Winter In The West," 1980,  
#1, 15-16 (edited by RGF)

"Forty Royal Ruby Years, 1940-  
1980," 1980, #2, 54-55

"FAIR LANE: HENRY FORD'S ESTATE"  
by Susan A. Howcroft,  
1980, #4, 97-107

FORD, CLARA BRYANT: 1980, #2, 31-32

FORD, EDSEL: 1980, #2, 32

FORD, HENRY: 1980, #2, 31

"FORD HOMES HISTORIC DISTRICT" by  
Joseph Oldenburg, 1980, #2, 31-51

FORD MOTOR COMPANY: 1980, #2, 32

FORDSON HIGH SCHOOL: 1980, #1, 19

"FORTY ROYAL RUBY YEARS, 1940-1980"  
by Ralph G. Fader, 1980, #2, 54-55

"FUTURE HISTORICAL MARKERS IN  
DEARBORN" by Winfield H. Arneson  
1980, #4, 111

G

GARRISON (SALISBURY) SCHOOL: 1980,  
#1, 4, 7, #2, 43  
GLASS, EARLY AMERICAN PRESSED  
PATTERN: 1980, #4, 108-110  
GNAU, TARA B.: SCHOOL SKETCHES:  
"George T. Martin School," 1980,  
#1, 18  
"Miller School," 1980, #1, 19  
"William Nowlin School," 1980,  
#2, 52  
"Robert Oakman School," 1980, #2, 53  
"River Oaks School," 1980, #3, 88  
"Oxford School," 1980, #3, 89  
"Roulo School," 1980, #4, 112  
"Salina School," 1980, #4, 113

H

HENRY FORD COMMUNITY COLLEGE:  
1980, #1, 19  
HISTORICAL MARKERS: 1980, #4, 111  
HOFFMAN, CHARLES F.: 1980, #1, 15-16  
HOMES AND SITES, DEARBORN, SURVEYED:  
1980, #1, 17  
HOWCROFT, SUSAN A.: "Fair Lane: Henry  
Ford's Estate," 1980, #4, 97-107

I

ILLUSTRATIONS:  
SEE ILLUSTRATIONS INDEX  
1980, #4,  
INDEX: 1980, #4,

J

JUNIOR COLLEGE, DEARBORN: 1980, #1, 19

K

KEOUGH, H.J., COMPANY: 1980, #2, 53

L

LAPHAM, DAVID P.: 1980, #2, 36  
LIEBOLD, E.G.: 1980, #2, 31-32, 35

M

MALLECK, BARBARA:  
employ., D.H.M., 1980, #2, 57  
MAPS:  
SEE ILLUSTRATIONS INDEX

MARTIN, GEORGE T.: 1980, #1, 18  
MARTIN, GEORGE T., SCHOOL: 1980,  
#1, 18  
McFADDEN-ROSS HOUSE:  
kitchen, 1980, #2, 57  
McLAUGHLIN, C. R.: 1980, #2, 32  
MILAS, ELIZABETH: "Early Pewter,"  
1980, #1, 11-14  
MILITARY:  
SEE SPECIFIC WAR  
MILLER SCHOOL: 1980, #1, 19  
MIRCH, NORMAN: 1980, #1, 10  
MOLONY, JOHN B.: 1980, #2, 36  
MOLONY SUBDIVISION: 1980, #2, 31-50  
MOORE, ANNA:  
obit., 1980, #2, 60  
MUSEUM GUILD OF DEARBORN:  
Fair, 1980, #2, 56  
MUSEUMS, LOCAL:  
list of, 1980, #2, 51

N

NEWS FROM THE MUSEUM:  
SEE EACH ISSUE  
NIEBERT, EDNA: 1980, #1, 6  
NOWLIN, ADELIA TRAVIS: 1980, #2, 52  
NOWLIN, ANNA CRANDELL: 1980, #2, 52  
NOWLIN, WILLIAM: 1980, #2, 52  
NOWLIN, WILLIAM, (PENN) SCHOOL:  
1980, #2, 52

O

OAKMAN, ROBERT: 1980, #2, 53  
OAKMAN, ROBERT, SCHOOL: 1980, #2, 53  
OLD TIMERS' LUNCHEON: 1980, #2,  
54-55  
OLDENBURG, JOSEPH: "Ford Homes  
Historic District," 1980, #2, 31-50  
ORGANIZATIONS:  
SEE SPECIFIC ORGANIZATION  
OWENS, DOROTHY A.: 1980, #1, 3-4,  
6, 10  
OWENS, SHIRLEY: 1980, #1, 4, 10  
OXFORD SCHOOL: 1980, #3, 89

P

PAINTINGS, RESTORED: 1980, #1, 23  
PENN (NOWLIN) SCHOOL: 1980, #2, 52  
PEWTER: 1980, #1, 11-14  
PHOTOGRAPHS UNIDENTIFIED: 1980,  
#1, 20

PICTORIAL HISTORY OF DEARBORN:  
1980, #1, 20  
PREHN, RUSSELL: 1980, #1, 10

Q,R

REARDON, EVELYN:  
"Early American Pressed Pattern  
Glass", 1980, #4, 108-110  
RELIGION:  
SEE SPECIFIC CHURCH  
RIVER OAKS SCHOOL: 1980, #3, 88  
ROSE GARDEN, FAIR LANE: 1980,  
#4, 99-100  
ROULO SCHOOL: 1980, #4, 112  
RUSSO, TONY, CONCERT: 1980, #2, 57

S

SALINA SCHOOL: 1980, #4, 113  
SALISBURY (GARRISON) SCHOOL: 1980,  
#1, 4, #2, 43  
SCHLAFF, CYRIL: 1980, #1, 10  
SCHLAFF, NORBERT: 1980, #1, 6  
"SCHOOL SKETCHES" by Tara B. Gnau,  
1980, #1, 18-19, #2, 52-53,  
#3, 88-89, #4, 112-113  
SCHOOLS:  
SEE SPECIFIC SCHOOL  
SHEPPARD, LAWRENCE C.:  
Vignettes of History:  
"American Revolution War, The, -  
Southern Theatre, 1980, #3, 81-87  
SMITH, ROSS. M.:  
obit. 1980, #3, 91  
SOUTHWESTERN (DuvALL) SCHOOL: 1980,  
#2, 43  
STREETS & ROADS: 1980, #2, 36,  
#3, 63-80  
"STREETS, WHAT'S IN A NAME?" by  
Donald Baut, 1980, #3, 63-80  
SURVEYING DEARBORN HOMES AND SITES:  
1980, #1, 17

T

THORNBURG, JASON D.:  
appt., D.H.C., 1980, #1, 114  
TIME CAPSULE: 1980, #2, 56  
TRACTOR PLANT: 1980, #2, 31  
TRAVIS, ADELIA: 1980, #2, 52  
TWORK, LESTER A.: "Dearborn's First  
Kindergarten Class," 1980, #1, 3-10

U

UNITED STATES ARSENAL:  
SEE Arsenal, UNITED STATES DETROIT

V

VICARY, HARRY: 1980, #2, 38, 40  
VIGNETTES OF HISTORY:  
"American Revolution War, The, -  
Southern Theatre -1778-1781,"  
1980, #3, 81-87

W

"WINTER IN THE WEST, A," edited by  
Ralph G. Fader, 1980, #1, 15-16  
WOOD, ALBERT: 1980, #2, 35, 38, 41

X, Y, Z

ILLUSTRATIONS INDEX

A

AUDITORIUM-GYMNASIUM: 1980, #1, 8

B,C

COMMANDANT'S QUARTERS: 1980,  
#1, Cover

D

DEARBORN HIGH SCHOOL: 1980, #1, 8  
DEARBORN PUBLIC SCHOOL: 1980, #1, 8  
DEARBORN PUBLIC SCHOOL BOUNDARY:  
1980, #1, 7  
DOMBROWSKI, EDWARD J.: 1980,  
#3, Cover

E, F

FAIR LANE MANSION: 1980, #4, Cover  
floor plans, 1980, #4, 106-107

FORD, CLARA: 1980, #4, Cover  
 FORD, MR. & MRS. HENRY: 1980,  
 #4, Cover  
 FORD HOMES: 1980, #2, Cover  
 construction, 1980, #2, 37, 39  
 floor plans, 1980, #2, 34b  
 models, 1980, #2, 45-47

G

GARRISON SCHOOL: 1980, #1, 9

H

HENSON, WILLIAM: 1980, #3, Cover

I,J,K

KINDERGARTEN CLASS (1915):  
1980, #1, 5

L,M

MAP: American Revolution War,1778-1781-  
 Southern Theatre,1980, #3, 83  
 MARTIN, GEORGE T., SCHOOL:  
 1980, #1, 18  
 MILLER SCHOOL: 1980, #1, 19  
 MOLONY SUBDIVISION:  
 plats, 1980, #2, 34, 34a

N

NOWLIN, WILLIAM, SCHOOL: 1980,#2,52

O

OAKMAN, ROBERT, SCHOOL: 1980,#2,53  
 OWENS, DOROTHY A.: 1980, #1, 9  
 OXFORD SCHOOL: 1980, #3, 89

P

PHOTOS UNIDENTIFIED: 1980,#1,20-21  
 POWER HOUSE (1921): 1980, #1, 9

Q,R

RIVER OAKS SCHOOL: 1980, #3, 88  
 ROULO SCHOOL: 1980, #4, 112

S

SALINA SCHOOL: 1980, #4, 113  
 SMITH, ROSS M.: 1980, #3, 91

T

TWORK, LESTER A.: 1980, #1, 9

U

UNIDENTIFIED PHOTOS:  
 1980, #1, 20-21

V,W,X,Y,Z

#####

CODE TO ABBREVIATIONS

D.H.C. - Dearborn Historical Commission  
 D.H.M. - Dearborn Historical Museum  
 employ. - employment  
 obit. - obituary  
 resig. - resignation



## DEARBORN HISTORICAL MUSEUM AND COMMISSION SERVICES

### \* Exhibits

Preservation of Two Historic  
Arsenal Era (1833-1875) Buildings  
Exhibit Annex: Early Farming & Shops  
Period Rooms  
Changing Exhibits  
Special Exhibits

### \* Education

Guided Tours  
Local History Lectures  
Pioneer & Indian Lectures  
Museum Collection Lectures  
School Education Program  
Junior Historians Program

### \* Volunteer Program

### \* Souvenir Counter

### \* Special Events

### \* Cultural-Civic Meetings

### \* Research

Historical Records & Library  
Local History Files  
Manuscripts & Archives  
Microfilms  
Books & Journals  
Pamphlets & Newspapers  
Photographs & Slides  
Tapes  
Maps

### \* Historical Markers

### \* Publication Program

Quarterly: THE DEARBORN HISTORIAN  
Book: THE BARK COVERED HOUSE  
Free Literature: Arsenal, Museum,  
Research, Local History, Indian,  
Dearborn Story, Dearborn's Names,  
& Other Special Pamphlets

The Museum sponsors the Museum Guild of Dearborn

The Museum is a member of:

- \* American Association of Museums
- \* American Association for State & Local History
- \* Dearborn Community Arts Council
- \* Dearborn Genealogical Society
- \* Dearborn Historical Society
- \* Historical Society of Michigan
- \* Michigan Archaeological Association
- \* Michigan Museums Conference
- \* Midwest Museums Conference
- \* National Trust for Historic Preservation
- \* Organization of American Historians
- \* Society of American Archivists

The Museum and Commission assume the responsibility of collecting, preserving and disseminating all aspects of Dearborn's long heritage by means of its educational, exhibit and research facilities.

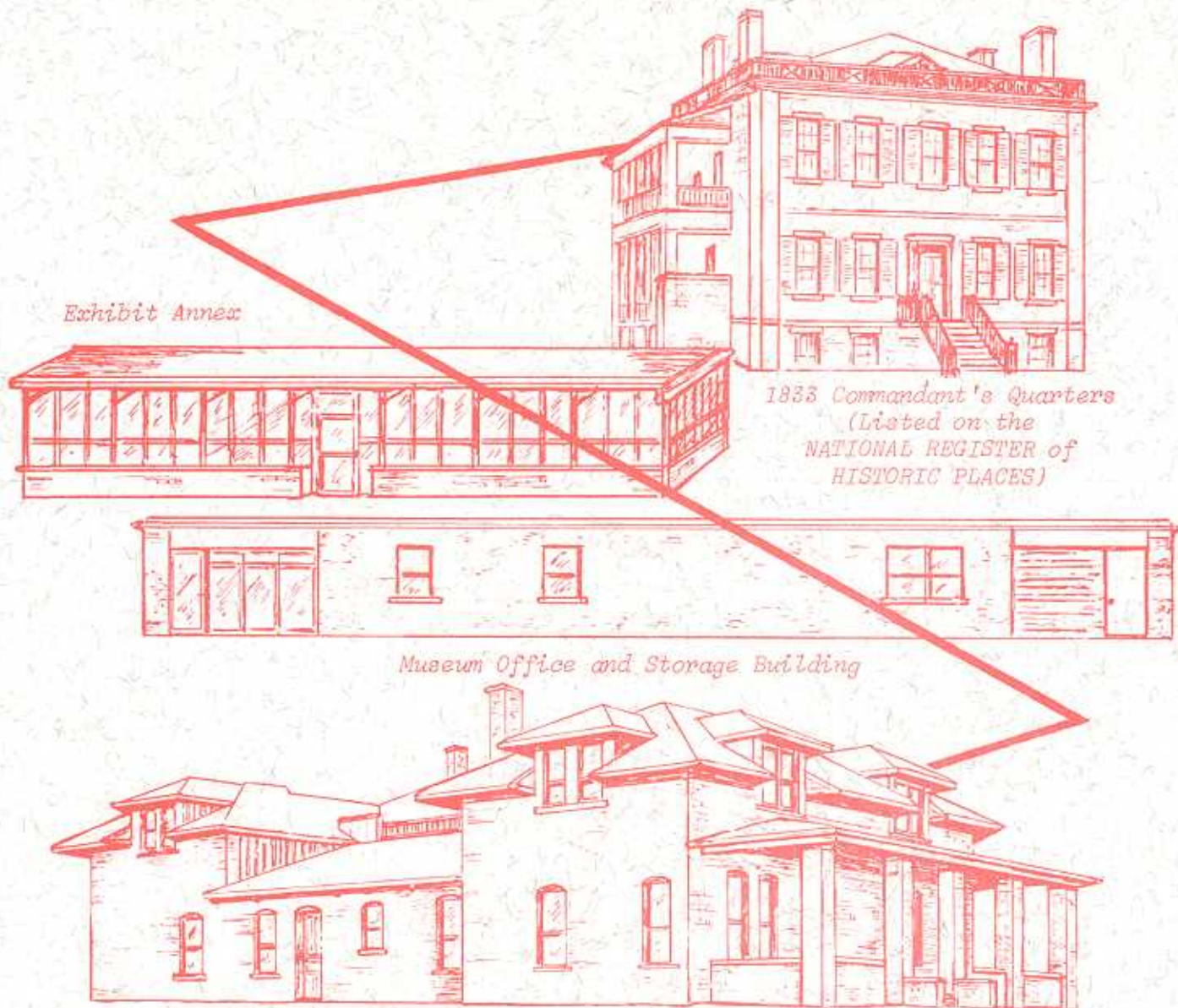


*H. Dearborn*

Major General Henry Dearborn  
1751-1829

City named for this  
Revolutionary War  
and War of 1812  
Patriot and Statesman

# Dearborn Historical Museum



*Exhibit Annex*

*1833 Commandant's Quarters  
(Listed on the  
NATIONAL REGISTER of  
HISTORIC PLACES)*

*Museum Office and Storage Building*

*McFadden-Ross House and Historical Records and Library  
(Originally the 1839 Powder Magazine)*

*Commandant's Quarters  
21950 Michigan Avenue  
Telephone: 565-0844*

*Museum Office &  
Historical Records  
Telephone:  
(313) 565-3000*



*McFadden-Ross House  
915 Brady Street  
Telephone: 561-9438*

*Free Admission  
Enjoy & Learn  
Through Your  
Heritage...Today*

*Open 9:00 A.M. to 5:00 P.M., Monday-Saturday (May-October)  
1:00 P.M. to 5:00 P.M., Monday-Saturday (November-April)  
Group tours & lectures by appointment during  
morning hours Museum is normally closed.*